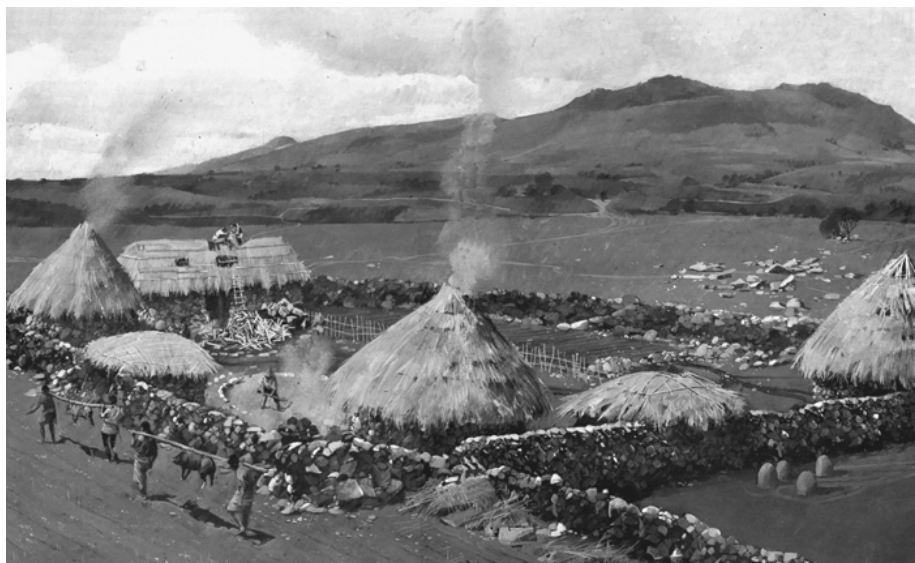


St Martin-by-Looe



News



Celtic Cornwall - Read how it was in the Parish, see inside

Summer 2016

**Published and funded by
St Martin-by-Looe Parish Council.
Delivered FREE throughout the Parish.**

stmartinpc1@btinternet.com

www.stmartinbylooepc.btck.co.uk

**St Martin By Looe
Parish Councillors**

Contact Numbers.



Chairman

Robert Henly 01503 240336

Vice Chairman

Roberta Powley 01503 240650

Councillors

Barbara Reynolds 01503 240520

Lynne Burt 01503 240383

Mike Elford 01503 265922

David Keeble 01503 263525

John Broad 01503 264459

Parish Clerk & Magazine Editor

Charles Hyde 01579 340905

stmartinpc1@btinternet.com

County Councillor

Armand Toms 01503 264823

atoms@cornwall.gov.uk

Advertisements

If you would like to include an advertisement in the next edition of St Martin By Looe News please contact The Clerk, Charles Hyde on 01579 340905 or by email stmartinpc1@btinternet.com. Costs: £20 for a full page, £10 for a ½ page, £5 for 1/3 page. Contract discounts are available.

The magazine is printed quarterly and has a circulation of 300 copies which are delivered throughout the Parish.

Contributions

We always welcome contributions from people living in the Parish. If you would like to air your views on a particular subject or have a photograph or piece of artwork for the front cover please get in touch with The Clerk.

Statutory Disclaimer

All articles and advertisements are published in good faith, St Martin By Looe Parish Council cannot check all details in the articles and any views expressed may not necessarily reflect those of the Parish Council. Neither can we be held responsible for the actions of any advertisers now or in the future.

Parish Council Update

Welcome to the Summer 2016 edition.

2016 will be a memorable year for many reasons, some good some sad and some important decisions would have to be made. June 23rd 2016 sees our country being asked whether or not to be part of the European Union, it's so important to go and mark your cross on the referendum paper, it's our country's future and it's in your hands.

Another major event this year is The Queens 90th birthday, the parish is celebrating with a party at No Man's Land hall on 12th June, just bring a plate of food and join in the fun.

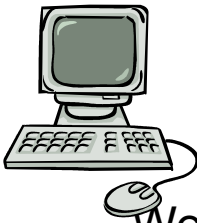
Inside this edition are some great articles, learn the Celtic Curse, cook a delicious summer pavlova and enjoy reading about bird song!

Planning Applications

Applications were received for the following: A two storey extension to allow joint living accommodation and internal renovations. Location: Murrayton Lodge, St Martin, Looe:

The conversion of barns into dwelling with access, car park and septic tank. Location: Longcoe Farm, St Martin:

An extension to east dormer and new dormer to west elevation. Location: Penhale Farm, St Martin.



simon hannaford Computer Solutions

Troubleshooting & Repairs

We come to your business or home

COMPUTER REPAIRS,
SOFTWARE & HARDWARE INSTALLS
BROADBAND INTERNET - EMAIL
WIRELESS NETWORK SET UPS
VIRUS REMOVAL/PROTECTION

ALL WORK GUARANTEED

THE HAVEN, BARBICAN HILL, LOOE, CORNWALL PL13 1BQ

01503 264160

Parish Council Update

Holland Road, tidy up

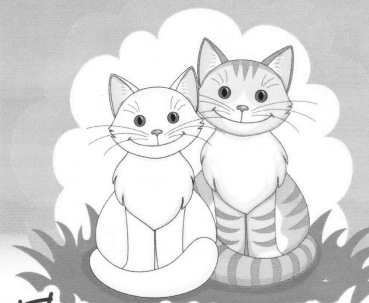
As part of the commemorations for the Queens 90th birthday, the Parish Council has decided to take over maintenance of the Holland Road Estate green areas, as you may have seen the grass and hedges have started to be cut on a regular basis. It is hoped this may encourage the residents of the estate to become proud of the estate again and maybe provide a bit of colour in their gardens.

Bus Shelters

The Parish Council are still working with Morval Parish Council to try to provide two bus shelters for the residents of No Man's Land, funds are being investigated by the Clerks and it is hoped the projects could be completed this year. Watch this space for further updates

Parish Council Meetings.

You are always welcome to attend the Parish council meetings in the Memorial Hall, No Man's Land. They usually are held on the first Thursday of each month but please check the noticeboards. Requests to speak during Public Participation need to be submitted to the Clerk by post or email at least 48 hours in advance.



**CHENEY
CATTERY**

Bucklawren Road, No Mans Land,
Looe, PL13 1QS

Brand new fully heated cattery catering for 24 cats on
the outskirts of Looe in a quiet rural location.

Conforms to latest regulations
Individual, double and treble pens available
Vet registered
All dietary needs catered for
Prices from £7.50 per day
Discounts for shared pens
Inspections welcome

TEL: 01503 240102
Mob: 07527 594075 / 07762 892775

Annual Reports - The Parish Council

By Robert Henly, Chairman.

This has been another busy year for the Parish Council. The regular monthly meetings have been well attended by Councillors. Attendance by the general public seems to have fallen slightly possibly due to less controversial issues coming before the council. We welcome members of the public to our meetings but request questions in writing before the meetings.

The three notice boards within the parish at No Man's Land, Windsworth and Millendreath help to keep residents informed of activities within the parish and the work of the parish council. Thanks to the councillors who keep them up to date.

We continue to campaign for a reduced speed limit to 40 mph on the B3253 through the village of No Man's Land and continue to look at the possibilities of a footpath from Holland Road to the main road.

The new fingerposts in the parish are mostly in good repair but there are now some of the old ones which are in need of repair which is now the responsibility of the parish council.

Concerns are continually being raised about the condition of the roads within the parish. Many of the roads in the parish east of Holland Farm were surface dressed last summer but these are again showing signs of wear after a wet winter. We are pushing for more major repairs to the road from the B3253 to Holland Farm which is in a terrible state of repair.

Little development has continued at Millendreath and we are sorry to hear of the end of the Millendreath in Bloom committee which helped to brighten up the village.

Many thanks to our Cornwall Councillor Armand Toms, for all his hard work in this parish and East Looe.

My thanks to our clerk, Charles Hyde for all the hard work he puts in to enable the smooth running of the council and all he does to edit and produce the quarterly parish magazine on our behalf. The magazine is now self-financing thanks to the sale of advertising space and is very informative to all parishioners. He always welcomes articles from parishioners.

Finally, I would like to thank my fellow councillors for their regular attendance and their endeavours throughout the year.

Annual Reports - St Martins Village Hall

By Tracy Chudleigh, Chairman.

Once again it has been a busy and successful year for the hall. Jumble sales have been well attended and profitable, both flower shows were well attended with plenty of entries, despite the bad weather. Our bumper Jumble Sale for Children's Hospice South West raised over £400.

Attendance at both the Easter and Christmas Bingo were up on last year, a reflection of the improving financial climate we hope!

The hall has been well used by outside organisations, plus many private bookings. All of the allotments are taken and there is a waiting list if any become available, please speak to a committee member if you are interested in being added to the list. All rentable spaces in the Car Park have been taken, if you wish to be added to the waiting list for the Car Park please contact Roberta Powley on 01503 240650. Please note: if you have not paid to use the Car Park then please do not park there. The disabled bays are for Blue Badge holders only.

The Committee is a little thin on the ground, if you know of anyone willing to give up a few hours a month we would love to hear from them. We are pleased to have completed two major projects over the past year: A new community seating area has been created to celebrate the safe return of all of the Parish Men who served in WW2. Many thanks to our builder, Adam Oliver. To connect the seating area with the hall we have reinstated the door on the north side. Many thanks to our contractor, Adrian Prout. We hope that this will offer another place to take tea in the good weather when we have functions at the hall.

One of the benches was funded by the Parish Council and a grant was received from County Councillor Armand Toms. We have also had several windows repaired.

We hope to redecorate the main hall this coming year and to have the parquet floor repaired.

We are saddened to note that we don't see many of the residents of the Parish at the hall; this is the hall for the Parish and we want to see it well used.

Personally I would like to thank all of the very hard working committee for their time and efforts over the last year, without them the hall would have to close. Support your hall, it is a fundamental part of the village and the Parish.

**Specialising in the sale
of quality
Rural, Coastal and Waterside
properties.**

Excellent local knowledge.

Showroom office on Plymouth's historic
Barbican.

*Rightmove, Primelocation and Zoopla.
Regular and prominent advertising in
The Western Morning News.*

Associated London Office on Park Lane.

To discuss the potential of selling your property please
contact Scott Parry for a confidential appraisal without
obligation

01752 202121 or 07469 852182

**ATWELL
MARTIN**
ESTATE AGENTS



What Time is it?

By David Keeble.

It is not always good when you find yourself awake in the early hours, any problems in your mind seem to be magnified and just will not go away.

I have found myself in this situation a couple of times recently but have been fortunate enough to have these moments coincide with one of nature's most pleasant episodes – the time just before 4.00 am, the Spectacle – the Dawn Chorus.

It occurs because at this time of year song birds start their breeding season to coincide with an abundance of food that can be found and plenty of daylight in which to find it.

The performance almost always starts in the same way – a lone bird, normally a Thrush or Blackbird, will go through its entire repertoire and one by one the other participants join in. Depending on the area there is an order in which each bird makes its contribution – not all the birds that join the chorus can be classed as song birds but the reason for singing is just the same. As a rough guide, birds that normally vocalise are – Blackbirds, Thrush, Robin, Wren, Tawny Owl, Chaffinch, Pheasant, Warblers and Finches. Other birds that join in can be picked out by an experienced ear but at its height there may be so many birds singing that it would be very difficult to identify a particular species.

There may be a reason for the sequence in which the particular birds join the chorus – the first birds start to sing just before first light and one of the food sources that is most common at this time of day is the worm, so there may be some truth in the old saying that 'the early bird really does get the worm'.

A more laid back approach is taken by the smaller birds, no need to be up and about until a bit later as their food, mainly insects, do not start to appear until there is more light and the air is warmer.

The whole performance by these songsters is hard work and the fact that it is the male bird that does the singing sends a message to the females that the bird that can sing the loudest and longest would make a good mate, passing on strong genes to their young and capable of defending a territory.

What Time is it? cont:

In most species once the male has attracted a mate he will sing less – a bird that sings on and on in to late season will be the bird that has failed to attract a mate – there may be human comparisons!



Photo www.theguardian.com

Some people have been known to set their alarm clocks to a ridiculous hour just so that they can hear this natural phenomenon but if you find yourself awake at the right time just open the window and enjoy the moment.

David Keeble



The Purely Cornish Farm Shop and Deli

Help us to support small independent Cornish producers and protect choice.

Large selection Cornish cheeses and pate, Cornish beer, cider wine and liqueurs, Quality local meat and Grandads veg

'Pick your own' Hampers filled with Cornish produce sent anywhere in UK

Open 7 days a week 0900 - 1700hrs

Fore Street East Looe PL13 1DT

T: 01503 262680

www.purelycornish.co.uk

ally@purelycornish.co.uk

History Snippet - Celtic Curses

Our Celtic Cornwall began to emerge in the mists of the Dark Ages. Family units swelled into tribes and tribes claimed territory. Possessions meant trade and trade meant strangers. There was a need for some blue-sky thinking on law and order.

And so developed a legal right called 'Ill-wishing'. If you had been wronged you could go and ask for the situation to be resolved amicably. No joy? Then you could go to the bard and formally 'Ill-wish' the wrong-doer. It was strictly understood that any unjust ill-wish would boomerang back to the ill-wisher.

If you woke up with a streaming cold one morning you might begin to search your conscience and wonder if you had been ill-wished. Only one-to-one with the bard would ease your mind!

The superstition was so powerful that the bard began to morph into a Saint.

Communities began encouraging their pet saints to put down roots in their neighbourhood. To do this you had to choose a suitable site - on the lee of a hill with good water supply - and your chief could appoint the saint who marked out his sanctuary - or - Uan - which was three spear-throws in diameter.



K9 STYLE

PET GROOMING

Jessica Tamblyn-Hayward

Qualified Pet Groomer

Bray Farm

Bindown

Nomansland, Near Looe

01503 240841 or

07834 473835



History Snippet - Celtic Curses

The saint merely had to sit there for forty days and nights, in prayer, eating simple food once a day with an egg on Sunday. He could then become truly holy and 'Ill-wish' and cure and baptise, safe on his sacred turf.

We have a Uan. It's called Lanturney. Lovely spot obviously once chosen by St Euny - or St Tierney.

The Uan never flourished into a church but the site maintained it's name and boundaries. In the old map it has become part of Mr. Buller's Keverall Estate and rented out as a six-acre smallholding with a cottage and a well. It's right on that sharp bend! So mind your language and drive carefully!

Jenny Wallis.

Public Notice

Referendum on the United Kingdom's membership of the European Union

1. A referendum will be held on **Thursday 23 June 2016** to decide on the question below:

Should the United Kingdom remain a member of the European Union or leave the European Union?

2. Applications to register to vote must reach the Electoral Registration Officer below by 12 midnight on **Tuesday 7 June 2016**. Applications can be made online:

www.gov.uk/register-to-vote.

3. New applications for postal votes or written instructions to change or cancel an existing postal or proxy voting arrangement must reach the Electoral Registration Officer at the address below by **5pm on Wednesday 8 June 2016**.

4. New applications to vote by proxy at this referendum must reach the Electoral Registration Officer at the address below by **5pm on Wednesday 15 June 2016**.

5. Applications to vote by 'emergency' proxy at this referendum on the grounds of physical incapacity or for work/service reasons must reach the Electoral Registration Officer at the address below by 5pm on Thursday 23 June 2016. The physical incapacity must have occurred after 5pm on Wednesday 15 June 2016. To apply on the grounds of work/service, the person must have become aware that they cannot go to the polling station in person after 5pm on Wednesday 15 June 2016.

Applications, cancellations or amendments to existing postal or proxy votes must be sent by the deadline to:

**The Electoral Registration Officer
Cornwall Council, St Austell Offices, 39
Penwinnick Road, St Austell, PL25 5DR**

Signed Paul K Morris Dated: Tuesday 17
May 2016. Regional Counting Officer – South
West & Gibraltar



FISHER MANAGEMENT
property consultancy

RENTING
PROPERTY
ESTABLISHED 1990

5 Barbican Parade, Barbican Road,
Looe, Cornwall PL13 1EZ

Tel 01503 262400

Mob 07810 865599

Fax 01503 263444

info@fishermanagement.co.uk

www.fishermanagement.co.uk

Looe Police Station contact number.

If you need to contact your local Police Station you can use the number below:

01503 266173

If there is no one available to answer your call please leave a message and a member of the team will contact you on their return.

To report a crime, or for information and advice:

Call 101 (Calls cost 15p)

Emergency 999

01392 452935 (Minicom) 0800 555111 (Crimestoppers)

BINDOWN STORES AND **POST OFFICE**

NO MAN'S LAND, NR. LOOE



For all your grocery requirements at sensible prices

INCLUDING

Beers, Wines and Spirits

ALSO



Daily & Sunday Newspapers



OPENING HOURS

Monday to Saturday, 7am - 6pm

Sunday 8am - 4pm

Under new management
Deb and Dave look forward to meeting you.

Tel: 01503 240840



THE NATIONAL LOTTERY™

Recipe - Pavlova

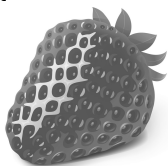
by The Hairy Bikers. BBC Recipes

Delicious with ripe summer strawberries.

Ingredients

For the meringue

- 4 large free-range egg whites
- 225g/8oz caster sugar
- ½ tsp vanilla extract
- 1 tbsp cornflour



For the filling

- 400ml/14fl oz double cream
- 400g/14oz strawberries, hulled, halved if large.
- 200g/7oz raspberries
- 150g/5oz blueberries
- 3 passion fruit (optional)
- Cape gooseberries (optional)
- mint sprigs, to decorate
- sifted icing sugar, to decorate

Method

* Preheat the oven to 150C/300F/Gas 2. Place a 25cm/10in dinner plate on a sheet of baking parchment and draw around it. Turn the paper over, and set to one side.

* Put the egg whites in a large, clean bowl and whisk with an electric whisk until stiff but not dry. They are ready when you can turn the bowl upside down without the eggs sliding out.

* Gradually whisk in the sugar, a tablespoon at a time, whisking for a few seconds between each addition. Adding the sugar slowly helps to build up volume in the meringue and make it stiff and shiny. Finally, whisk in the vanilla extract and cornflour until well combined.

* Dab a small amount of the meringue in the corners of a large, sturdy baking tray or sheet. Position the baking parchment, drawn side down, on the baking sheet, using the meringue dabs to secure it to the tray. You should be able to see the circle through the paper.

* Spoon the meringue into the circle and shape with the back of a serving spoon or rubber spatula to create a large meringue nest, with soft peaks rising on all sides. Place in the centre of the oven and bake for 1 hour until very lightly coloured and crisp on the outside. (If the meringue seems to be becoming too brown, reduce the temperature of the oven). After 1 hour, turn the oven off and leave the meringue for a further hour.

Remove from the oven and leave to cool completely.

* Up to 2 hours before serving, carefully release the meringue from the baking parchment, using a spatula if necessary, and place onto a large serving plate. Whip the cream until soft peaks form and spoon into the centre of the meringue. Top with the strawberries, raspberries and blueberries, and the gooseberries if using. Cut the passion fruit and scrape the pulp over.

* Decorate with sprigs of mint and dust with sifted icing sugar to serve.

No Man's Land Hall

We are celebrating the Queen's 90th birthday by inviting all the residents of our Parish to a party in the Hall on Sunday 12th June from 4pm till 6pm. Lots of fun for all. Bring a plate of food to share and come and join us.

Come and test your knowledge on our **Quiz night on Friday June 17th at 7pm**. There will be refreshments, a raffle and prizes for the winners. Only £1.00 per person to enter.

There will be a **BUMPER Jumble sale on Saturday 25th June**, doors open 2.30pm. Lots of items on offer, also a raffle and refreshments. This is not to be missed!

The Annual Flower Show this year will be on Saturday 6th August at 2.30pm. Please contact Tracy 01503 240704 nearer the time for schedules and information.

On the **16th – 23rd July** we once again welcome the **Barnsley School of Music**. The School use the Hall as a base when they are performing in the locality.

If you wish to hire the Hall, please contact Mrs R. Powley 01503 240650.

We also have a billiard/snooker room with a full size billiard table if anyone is interested in starting a club.

We hope you are all enjoying the seats in the Hall garden now the weather is improving.





**NO MAN'S LAND
VILLAGE HALL
WELCOMES ALL THE RESIDENTS
OF OUR PARISH**

**TO
BRING A PLATE TO SHARE
& JOIN IN THE FUN!**



**QUEEN'S BIRTHDAY
CELEBRATION PARTY**

**SUNDAY 12th JUNE
4pm – 6pm**

**ALL CHILDREN MUST BE
ACCOMPANIED BY AN ADULT**



Cornwall Council - Getting in Touch

General enquiries (and all services)	0300 1234 100
Children, schools and families	0300 1234 101
Libraries	0300 1234 111
Benefits	0300 1234 121
Adult care and support	0300 1234 131
Refuse and recycling	0300 1234 141
Planning	0300 1234 151
Housing	0300 1234 161
Council tax and business rates	0300 1234 171
Registration services	0300 1234 181
Trading standards	0300 1234 191
Environmental management	0300 1234 202
Environmental health & licensing	0300 1234 212
Roads, transport and parking	0300 1234 222

STEVE WILLS HAULAGE

We can supply Dumpy Bags / 25kg bags of

Decorative Chippings

Sand and aggregates

Cement and Blocks

Tipper & Grab Hire

Delivery or collection available

Fast efficient service

Tel: 01503 220641

Mobile: 07970072394

Cheney Cattery - Advertisers Announcement.

At Cheney we run a exclusive cattery located in rural area surrounding Looe, the cattery overlooks quiet serene countryside and provides a safe, secure and comfortable environment for your cat.

Cats like routine and predictability and find being cared for by the same person is reassuring. We will quickly learn your cat's normal behaviour and feeding patterns and pick up anything unusual.

We have found that the cats in our care are perfectly content so long as they are warm, comfortable, feel safe and are given their preferred foods. Your cat is safer and more stimulated in the cattery than with a pet sitter who just appears to feed your cat and then leave.

Group Travel Coach Hire

Enterprise park, Midway Road, Bodmin, PL31 2FQ

2016 COACH EXCURSIONS

23 rd JUNE	POWDERHAM CASTLE & RIVER EXE CRUISE
7 TH /8 TH JUL	RHS WISLEY & HAMPTON COURT GARDEN SHOW
25 th JULY	SEATON TRAMWAY & DONKEY SANCTUARY
7 th AUG	FESTIVAL OF BRITISH EVENTING – GATCOMBE
14 th AUG	JURASSIC COAST – SEA CRUISE TO SIDMOUTH
17 th AUG	BRITISH FIREWORK CHAMPIONSHIPS
27 th – 28 th AUG	GREAT DORSET STEAM FAIR WEEKEND
2 nd – 4 th SEP	BURGHLEY HORSE TRIALS
13 th SEP	WIDECOMBE FAIR
5 th NOV	BRIDGWATER CARNIVAL

FUTURE TRIPS:

TURKEY & TINSEL, AUTUMN TOUR, GOOSEY FAIR, CLARKS VILLAGE, MOUSEHOLE & ANGARRACK LIGHTS PLUS MORE

16 TO 70 SEAT COACHES AVAILABLE FOR PRIVATE HIRE,

CORPORATE WORK, WEDDINGS

(CAN INCLUDE STAG & HEN PARTY PACKAGE)

AIRPORT BUS TRANSFERS.

FOR BOOKINGS AND ENQUIRIES PLEASE CALL

01208 77989/01208 72669

Website:www.grouptravelcoachhire.com Email:benneymoon@btinternet.com

Millendreath In Bloom 2013 -2016

By John Broad. Chairman MiB.

Millendreath in Bloom came to life early in 2013 and quickly formed a Committee of local resident volunteers from Millendreath with the aim of tidying up and brightening the verges for the enjoyment of residents and visitors. With this project came the commitment to enter into South West in Bloom.

During this time the project raised monetary support from St Martins Parish Council, Espalier and local business sponsoring troughs and boats as well as volunteers putting their hands in their own pockets and holding car boot sales. All monies raised enabled administration costs and purchase of all the necessary horticultural goods and plants. For 3 years in succession Millendreath in Bloom were judged by RHS judges and achieved silver awards every year successful in no small way due to the hours put in by the volunteers.

Early this year 2016 the committee reluctantly made the decision to end our project due to the dwindling number of volunteers despite efforts to recruit. Perhaps someone will hopefully revive it again in the future? Remaining funds raised via car boots were shared with 3 local charities. It just remains to give huge thanks to everyone who made the project possible; going by the many compliments everyone enjoyed Millendreath in Bloom.

CHENPUMP UK LTD.

The Pump Division of CPMR Ltd

PUMP & WATER ENGINEERING SPECIALISTS

Boreholes, Drilling & Dowsing, Wells & Private Water Supplies,
Sewage & Waste Water

PH, UV, Iron Water Treatment & Filters, Pipes, Spares & Fittings,
Pressure Boosting

Rainwater Harvesting, Service & Maintenance Contracts
Sales Service & Repairs, Site and Full Workshop Service

24hr Plymouth (01752) 695688; Aaron Bray Mobile 07973 120224

www.cpmr.co.uk: www.chenpump.com

aaron@chenpump.com

A family company providing a professional service covering all of Devon & Cornwall, Moors inc.



*A great venue for Parties
Christmas, Birthdays and Anniversaries
Weddings and Funerals
Finger and Fork Buffets
through to 4 Course Meals.*

*Our renowned Sunday Carvery now
EVERY SUNDAY
And still only **£7.95** for main course.*



*Ample parking and **visitors very welcome.**
Booking in advance advised.*

Tel: (01503) 240239

Useful Telephone Numbers

Police

Devon & Cornwall 101
Emergency 999
Coastguard 999

Coastguard

HM Falmouth 01326 310800
Brixham 01803 884002

Home Emergency

Gas 0800 371787
Water 0800 169 1144
Electricity 0800 111999
Floodline 08459 881188

Hospitals

Truro 01872 250000
Liskeard 01579 335600
Derriford 0845 1558155

Doctors

Looe Surgery 01503 266960
Liskeard. Oaktree 01579 335320
Liskeard. Rosedean 01579 343133

Councils

Cornwall (see inside)
Looe Town Council 01503 262255

Buses

Western Greyhound 01637 871871

Airports

Exeter 01392 367433
Newquay 01637 860600
Bristol 0870 121 2747
Heathrow 0871 472 5125
Gatwick 0844 335 1802

Railway

Enquiries 08457 484950

Taxis

Looe Taxis 01503 262405
Liskeard, Anytime 01579 346007

Vets

Looe, Calweton 01503 253773
Liskeard Luxstowe 01579 342120
Liskeard DJ Ellis 01579 342602



R J REYNOLDS
PLUMBING & HEATING Ltd
Phone **01503 240520**
Mobile **07843565852 / 07800579144**



All types of plumbing and heating,
Oil, Natural gas LPG. lead work Underfloor
heating, landlords certificates/ Gas safety
checks, Boiler servicing.



1 Bucklawren Road, St Martins, Looe,
Cornwall, PL13 1QS

